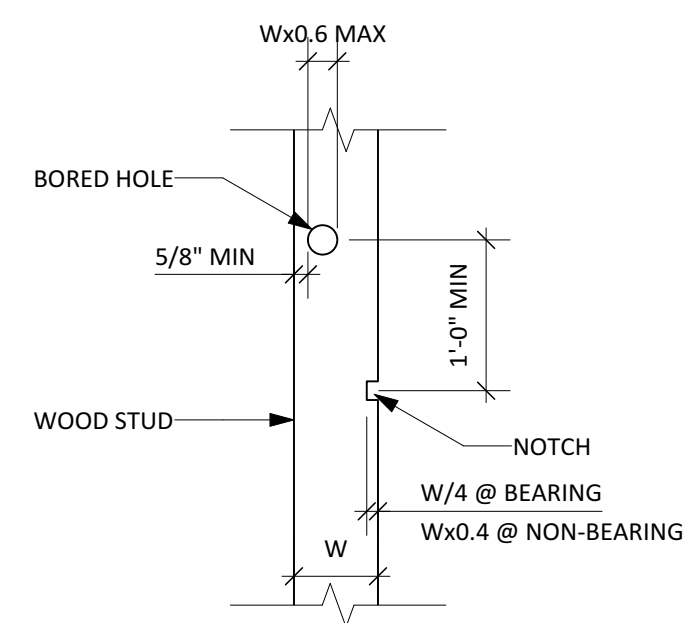
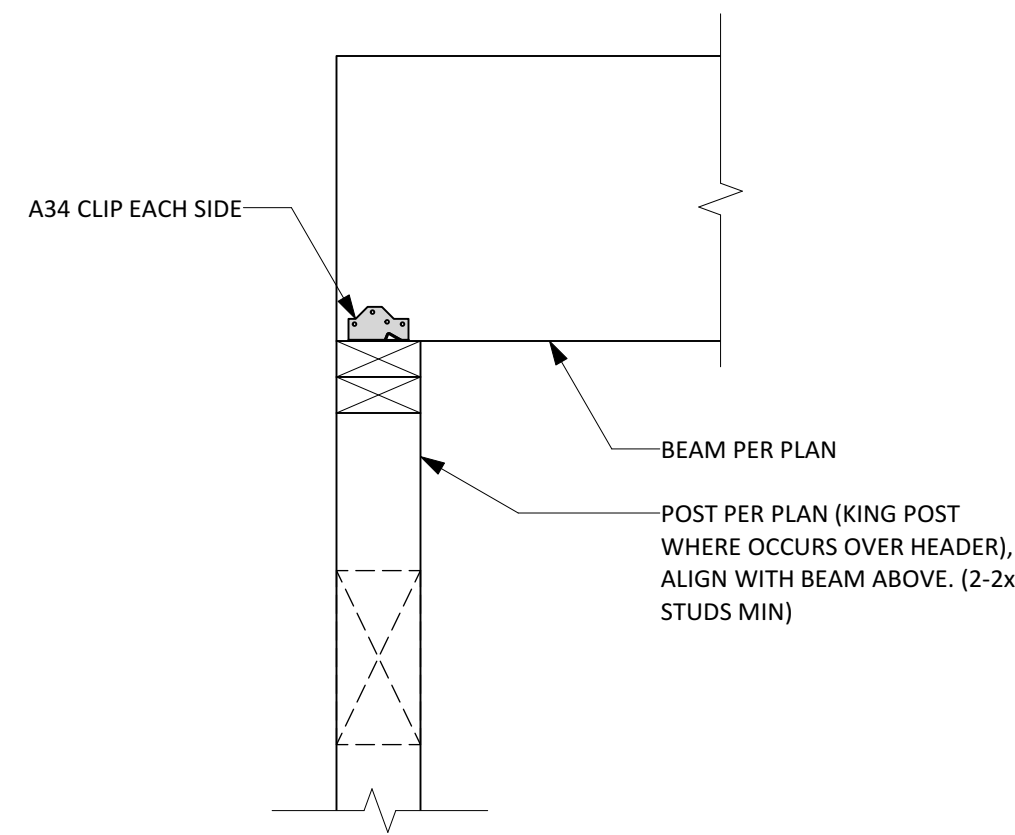


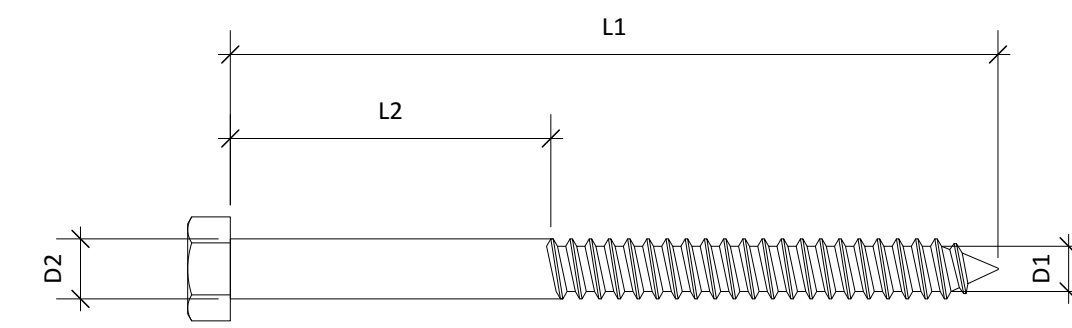
NOTE: BORED HOLE SHALL NOT BE LOCATED ON THE SAME SIDE OF STUD AS CUT OR NOTCH. AT EXTERIOR WALLS, NO BORED HOLES OR NOTCHES WITHIN THE MIDDLE 1/3 OF STUD HEIGHT



10 TYPICAL WALL STUD NOTCHING & BORING

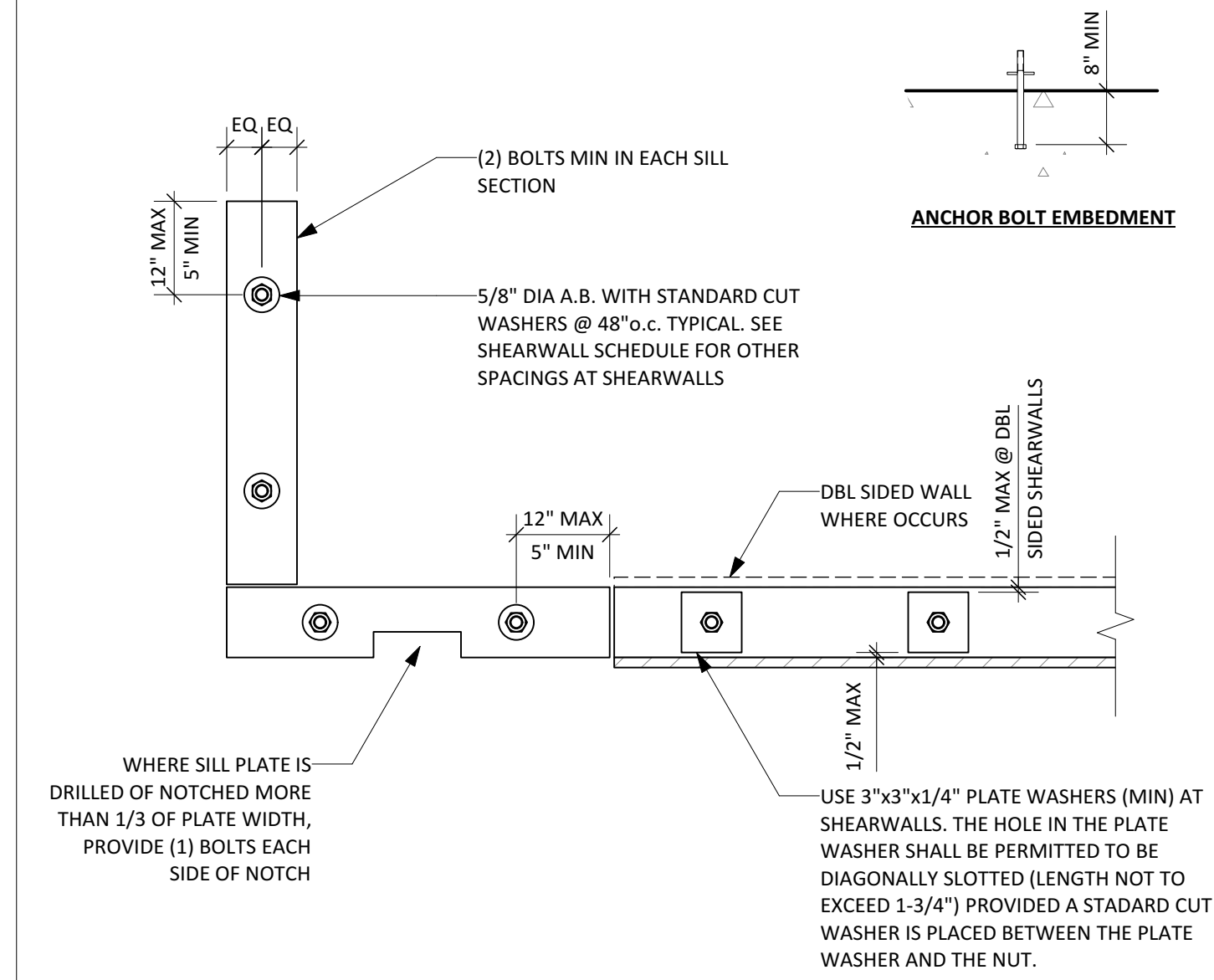


7 TYPICAL BEAM TO TOP PLATE

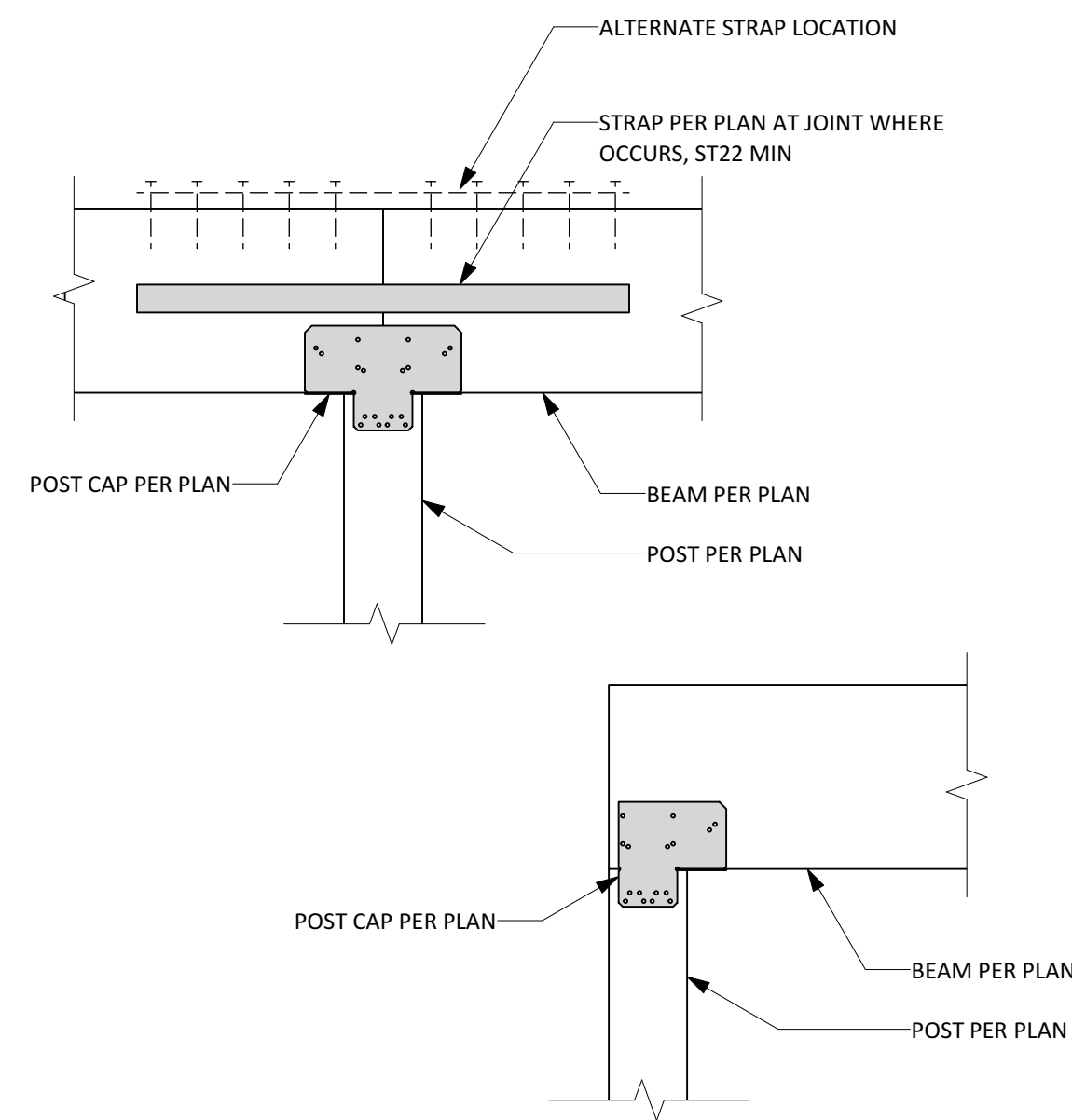


- INSTALLATION SEQUENCE**
1. DRILL HOLE 60-75% OF D1 FOR DISTANCE OF L1
 2. DRILL HOLE OF DIAMETER OF D2 FOR DISTANCE OF L2
 3. RETIGHTEN SCREWS BEFORE FINAL CLOSING IN

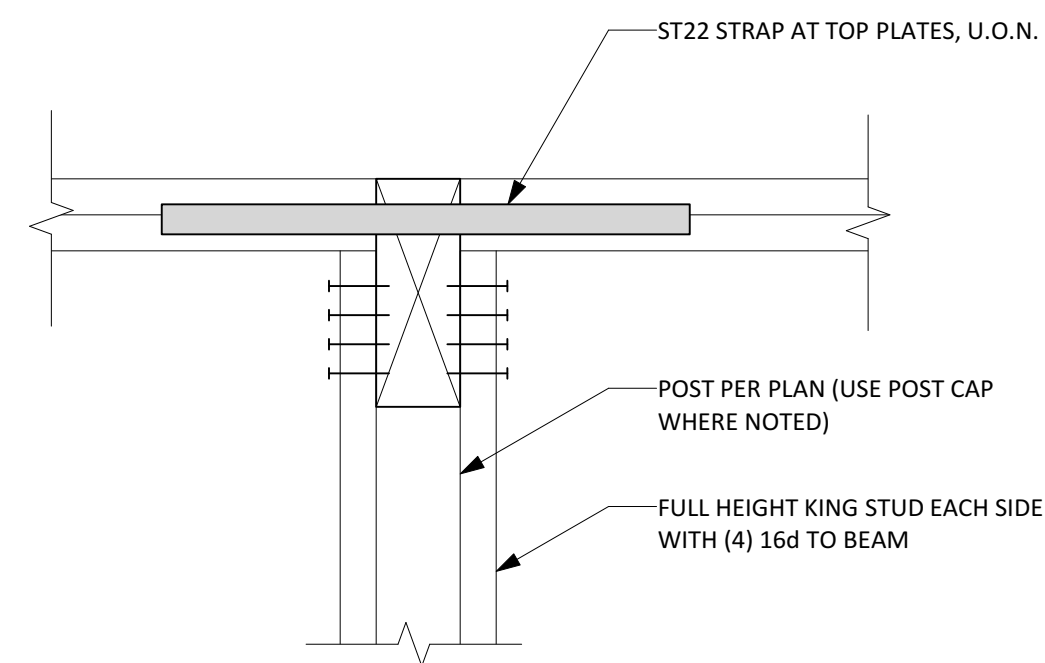
4 TYPICAL LAG SCREW INSTALLATION



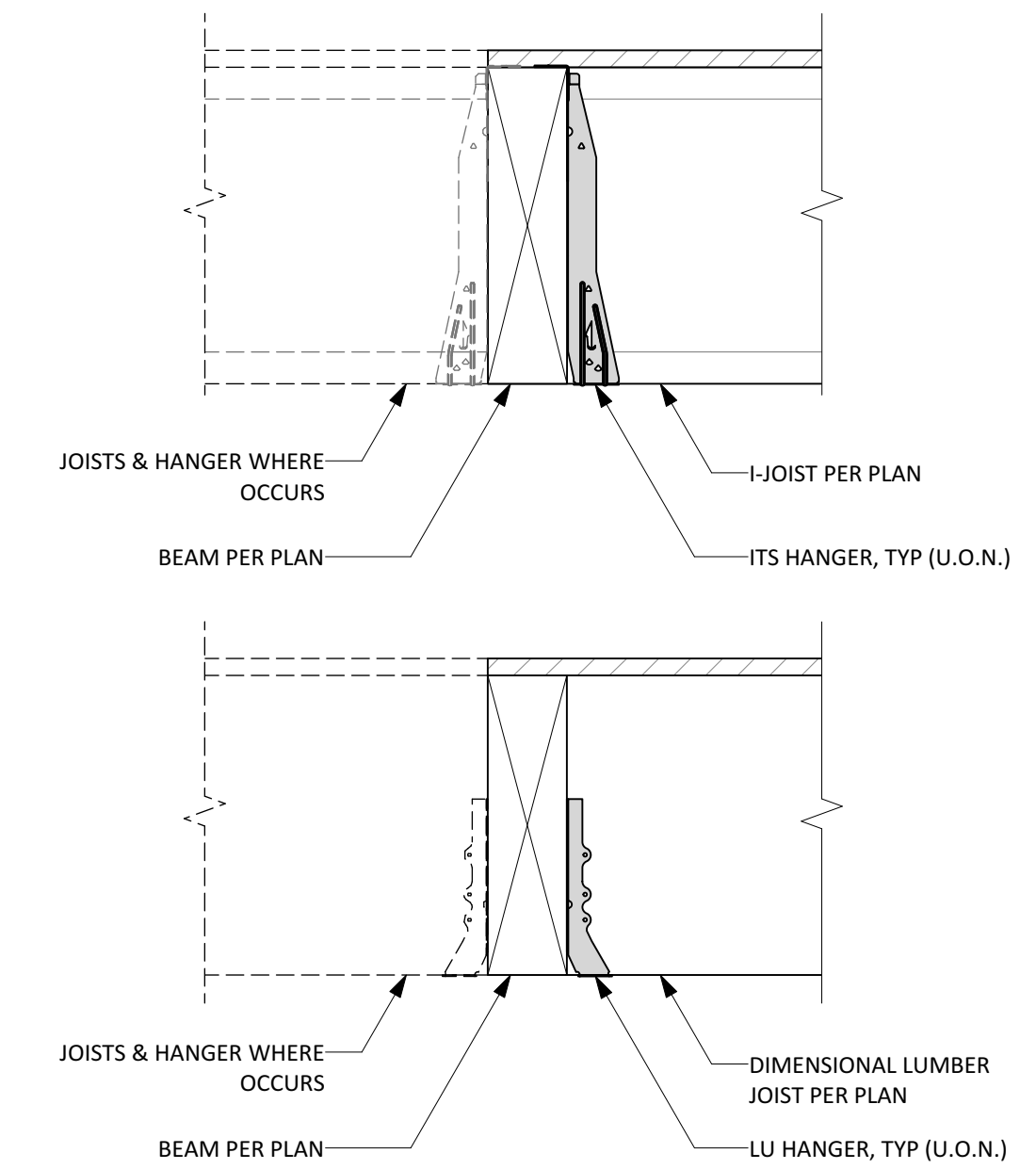
1 TYPICAL ANCHOR BOLTS AT SILL PLATE



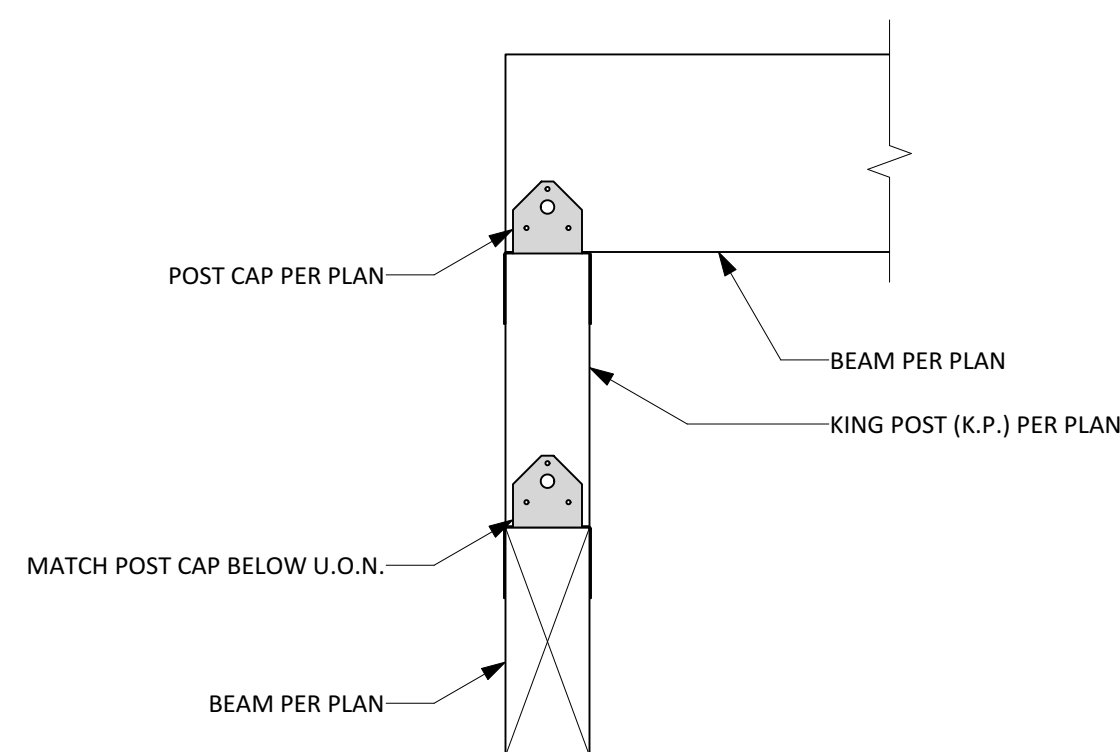
11 TYPICAL BEAM TO POST



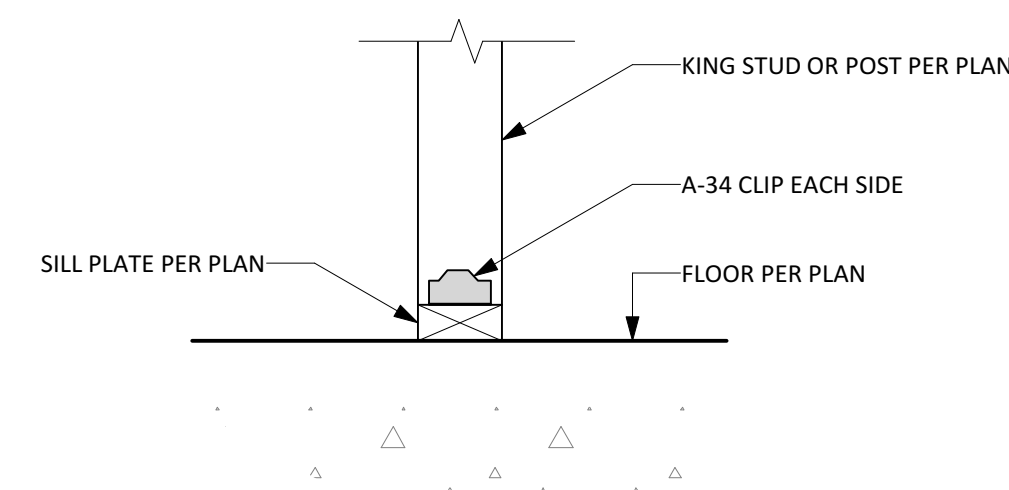
8 TYPICAL BEAM POCKET



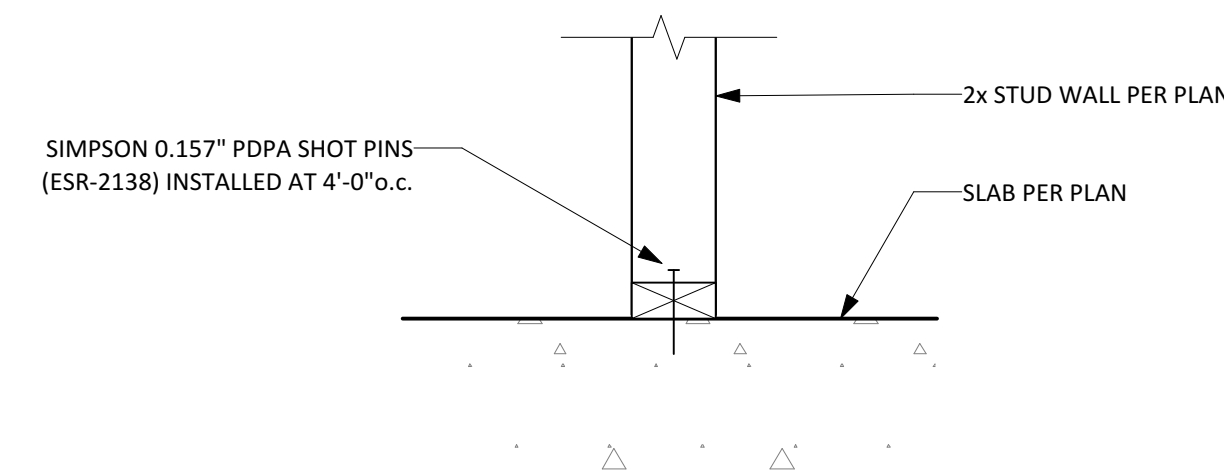
2 TYPICAL JOIST TO BEAM CONNECTION



12 TYPICAL KING POST TO BEAMS



9 TYPICAL KING STUD/POST AT SILL PLATE



6 TYPICAL NON-BEARING WALL TO SLAB

3

Revisions:

△	Date

Date: 7/17/21
Scale:
Project No: 21.070
Sheet: