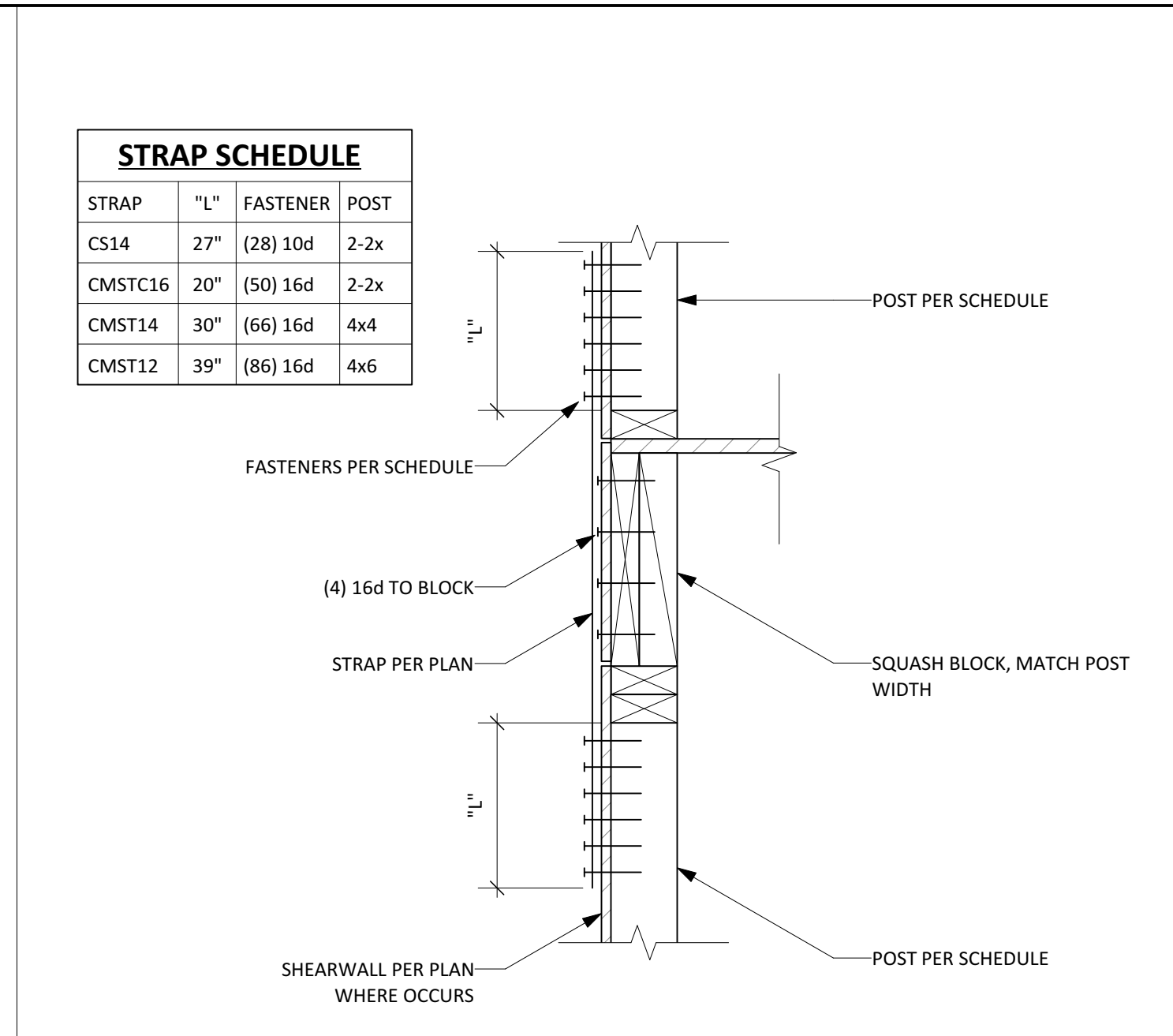


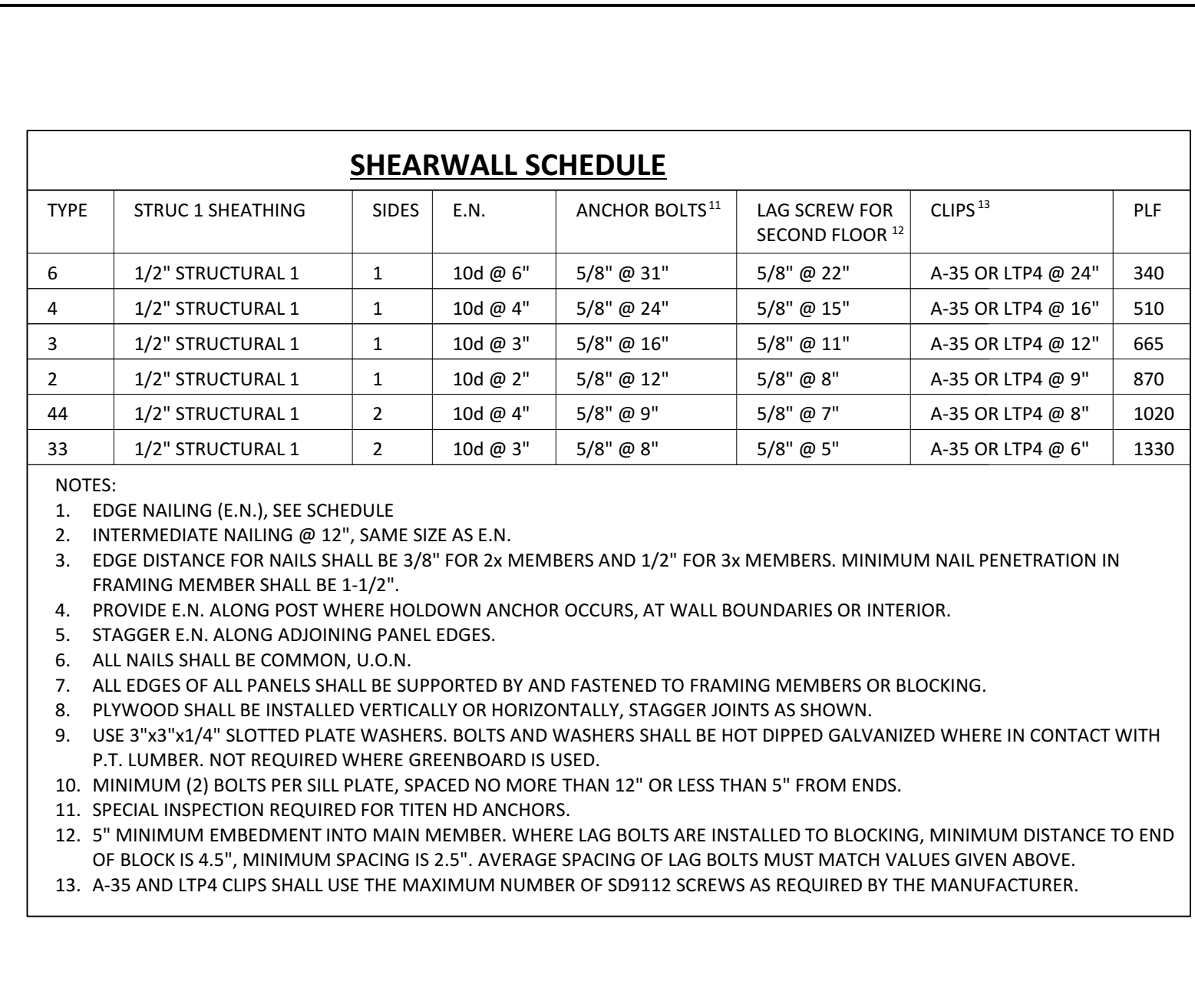
STRAP SCHEDULE				
WALL TYPE	STRAP	"L"	FASTENER	BLOCK
6	CS14	27"	(28) 10d	3x
ALL OTHERS	CMST12	39"	(86) 16d	4x

10 TYPICAL HOLE IN SHEARWALL



STRAP SCHEDULE			
STRAP	"L"	FASTENER	POST
CS14	27"	(28) 10d	2-2x
CMSTC16	20"	(50) 16d	2-2x
CMST14	30"	(66) 16d	4x4
CMST12	39"	(86) 16d	4x6

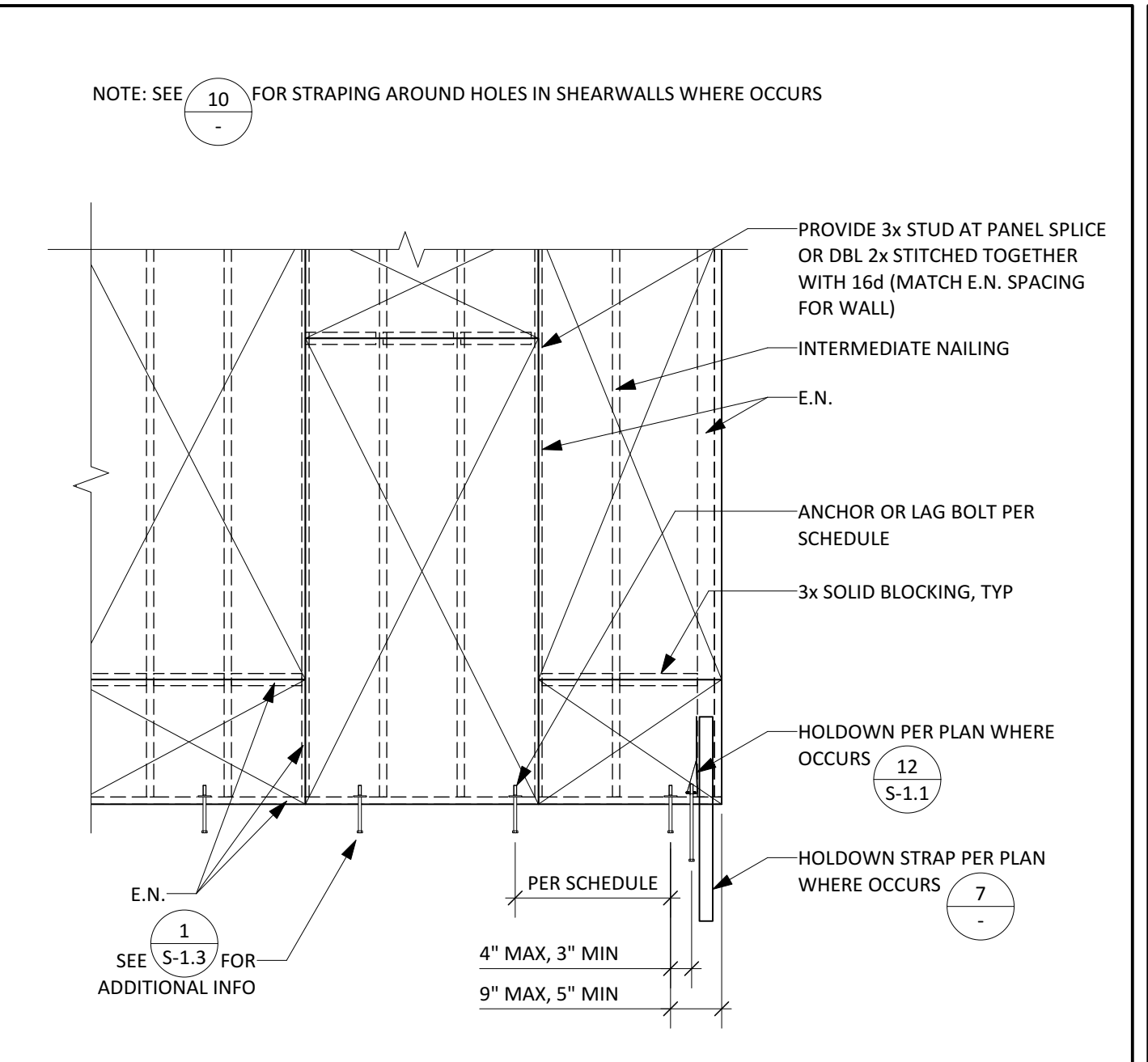
7 TYPICAL HOLDDOWN STRAP



SHEARWALL SCHEDULE							
TYPE	STRUC 1 SHEATHING	SIDES	E.N.	ANCHOR BOLTS ¹¹	LAG SCREW FOR SECOND FLOOR ¹²	CLIPS ¹³	PLF
6	1/2" STRUCTURAL 1	1	10d @ 6"	5/8" @ 31"	5/8" @ 22"	A-35 OR LTP4 @ 24"	340
4	1/2" STRUCTURAL 1	1	10d @ 4"	5/8" @ 24"	5/8" @ 15"	A-35 OR LTP4 @ 16"	510
3	1/2" STRUCTURAL 1	1	10d @ 3"	5/8" @ 16"	5/8" @ 11"	A-35 OR LTP4 @ 12"	665
2	1/2" STRUCTURAL 1	1	10d @ 2"	5/8" @ 12"	5/8" @ 8"	A-35 OR LTP4 @ 9"	870
44	1/2" STRUCTURAL 1	2	10d @ 4"	5/8" @ 9"	5/8" @ 7"	A-35 OR LTP4 @ 8"	1020
33	1/2" STRUCTURAL 1	2	10d @ 3"	5/8" @ 8"	5/8" @ 5"	A-35 OR LTP4 @ 6"	1330

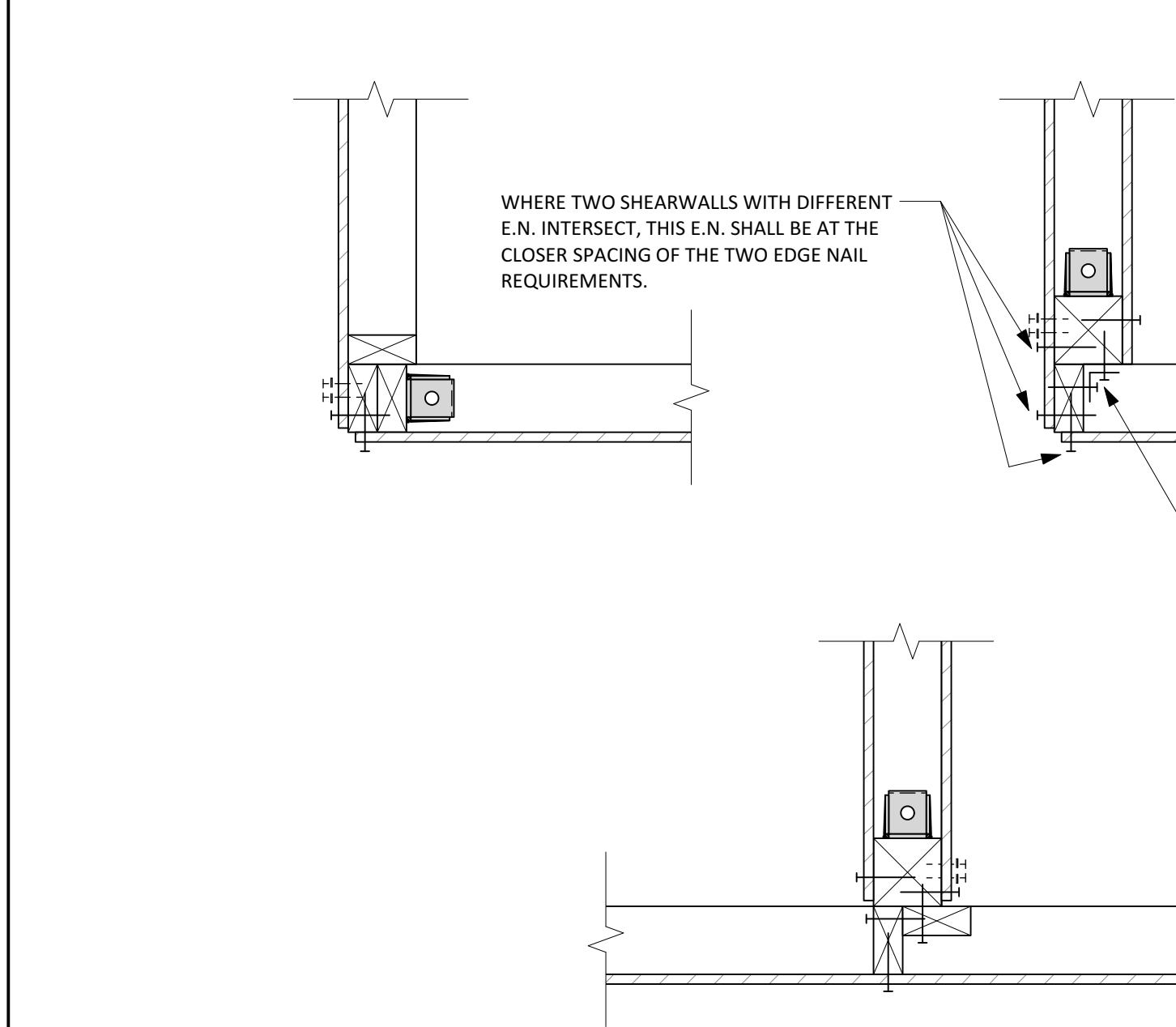
- NOTES:
- EDGE NAILING (E.N.), SEE SCHEDULE
 - INTERMEDIATE NAILING @ 12", SAME SIZE AS E.N.
 - EDGE DISTANCE FOR NAILS SHALL BE 3/8" FOR 2x MEMBERS AND 1/2" FOR 3x MEMBERS. MINIMUM NAIL PENETRATION IN FRAMING MEMBER SHALL BE 1-1/2".
 - PROVIDE E.N. ALONG POST WHERE HOLDDOWN ANCHOR OCCURS, AT WALL BOUNDARIES OR INTERIOR.
 - STAGGER E.N. ALONG ADJOINING PANEL EDGES.
 - ALL NAILS SHALL BE COMMON, U.O.N.
 - ALL EDGES OF ALL PANELS SHALL BE SUPPORTED BY AND FASTENED TO FRAMING MEMBERS OR BLOCKING.
 - PLYWOOD SHALL BE INSTALLED VERTICALLY OR HORIZONTALLY, STAGGER JOINTS AS SHOWN.
 - USE 3"x3"x1/4" SLOTTED PLATE WASHERS. BOLTS AND WASHERS SHALL BE HOT DIPPED GALVANIZED WHERE IN CONTACT WITH P.T. LUMBER. NOT REQUIRED WHERE GREENBOARD IS USED.
 - MINIMUM (2) BOLTS PER SILL PLATE, SPACED NO MORE THAN 12" OR LESS THAN 5" FROM ENDS.
 - SPECIAL INSPECTION REQUIRED FOR TYPEN HD ANCHORS.
 - 5" MINIMUM EMBEDMENT INTO MAIN MEMBER. WHERE LAG BOLTS ARE INSTALLED TO BLOCKING, MINIMUM DISTANCE TO END OF BLOCK IS 4.5". MINIMUM SPACING IS 2.5". AVERAGE SPACING OF LAG BOLTS MUST MATCH VALUES GIVEN ABOVE.
 - A-35 AND LTP4 CLIPS SHALL USE THE MAXIMUM NUMBER OF SD9112 SCREWS AS REQUIRED BY THE MANUFACTURER.

4 TYPICAL SHEARWALL SCHEDULE

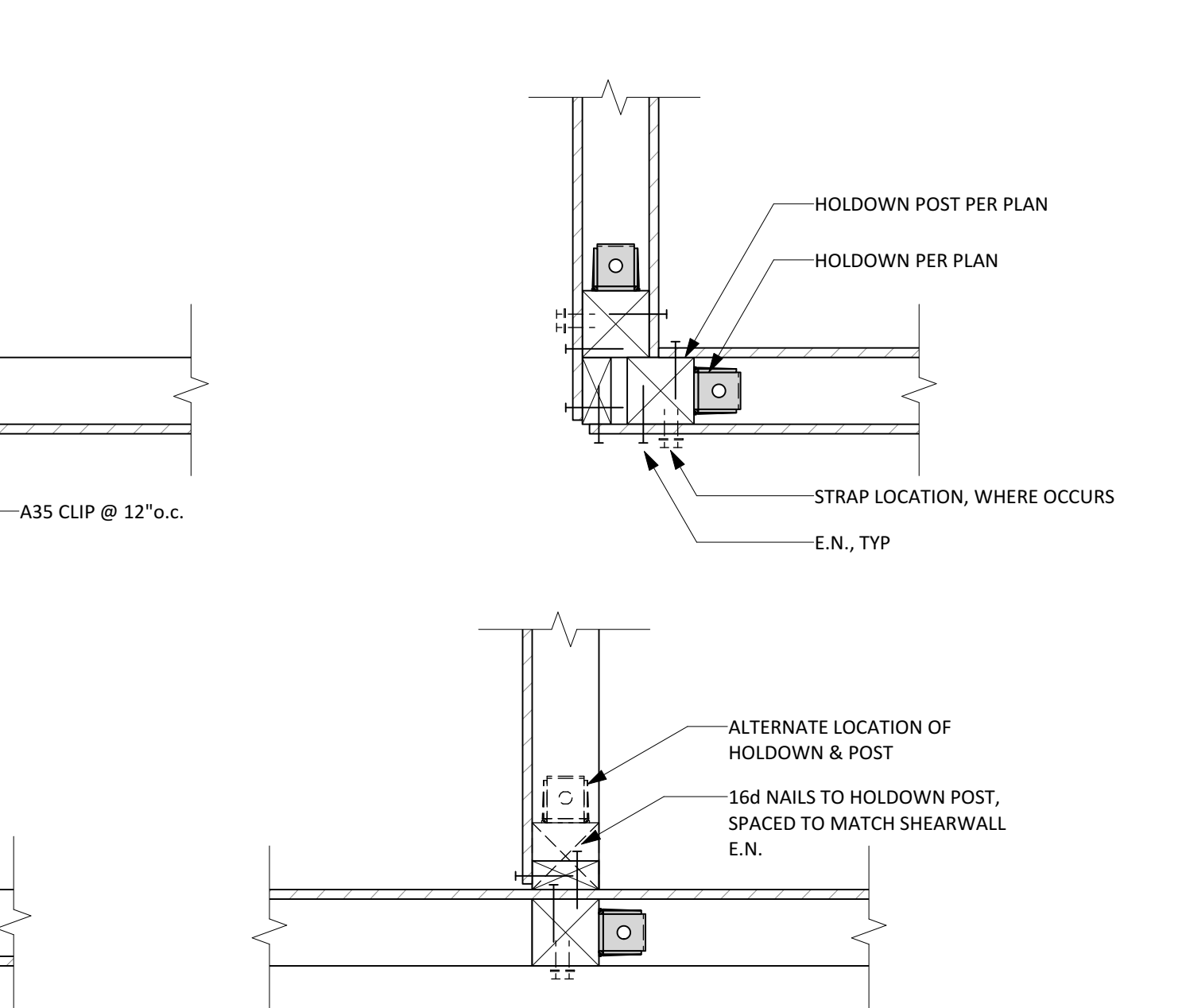


NOTE: SEE 10 FOR STRAPPING AROUND HOLES IN SHEARWALLS WHERE OCCURS

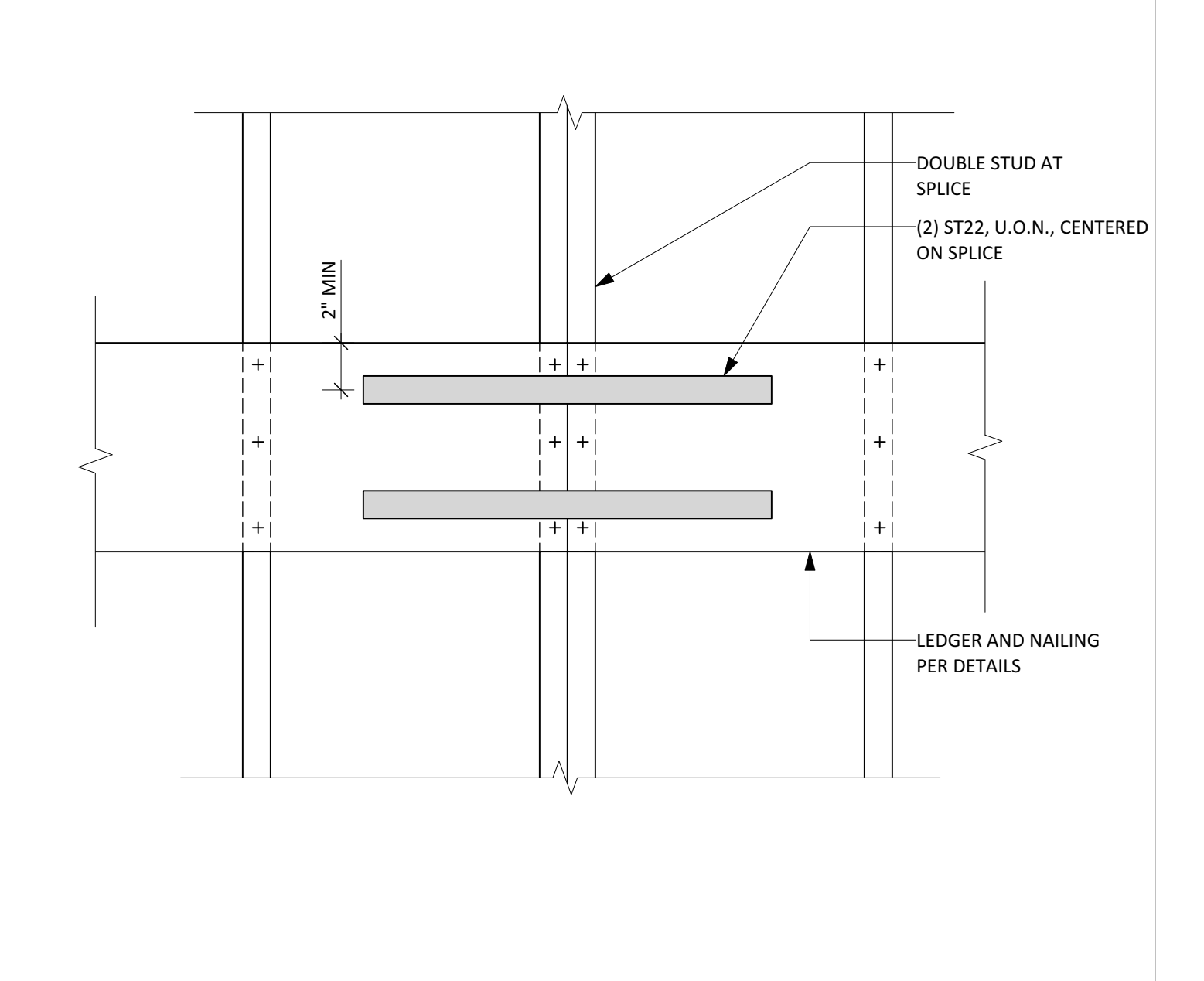
2 TYPICAL HORIZONTAL SHEATHING



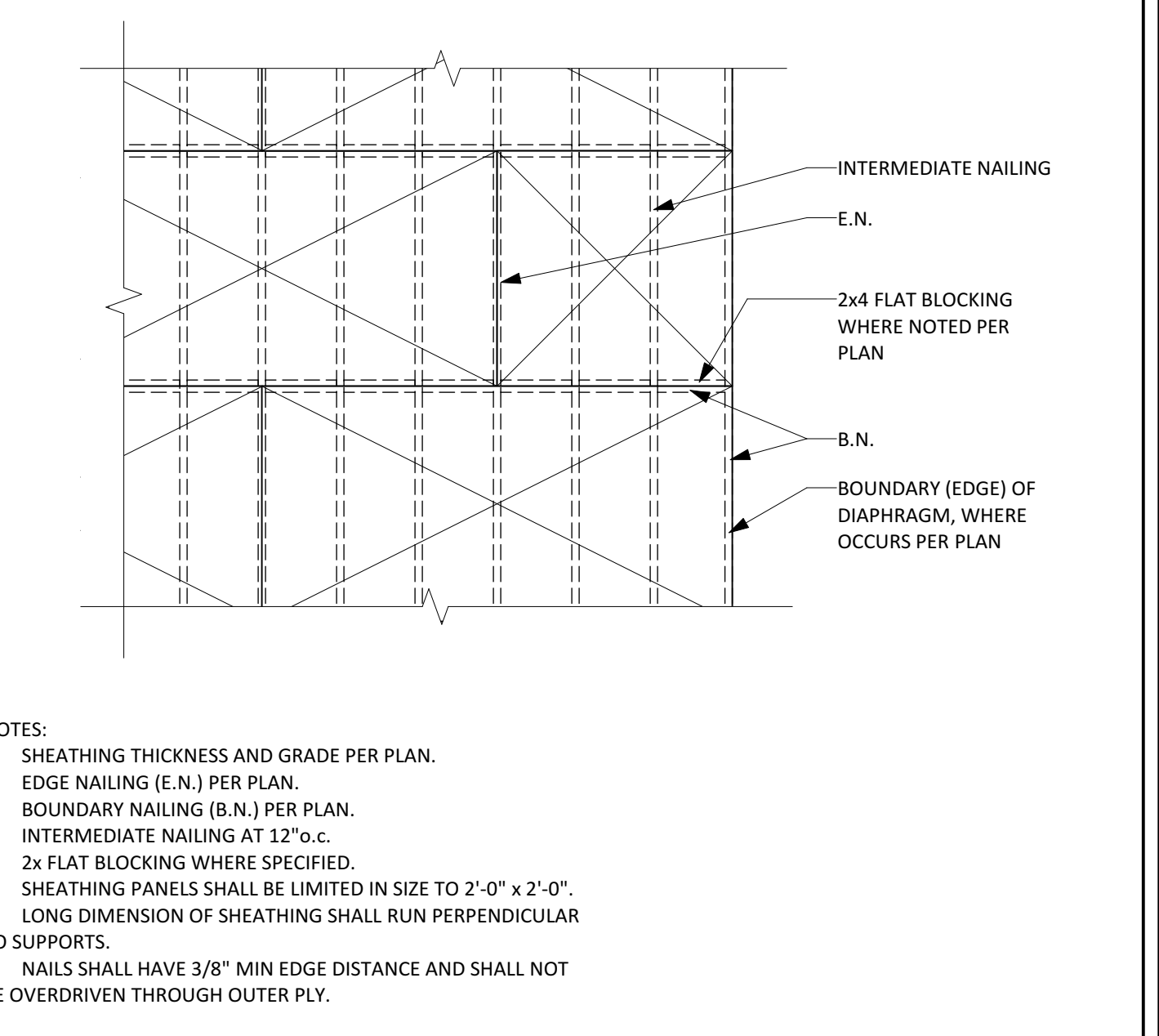
11 TYPICAL SHEARWALL INTERSECTIONS



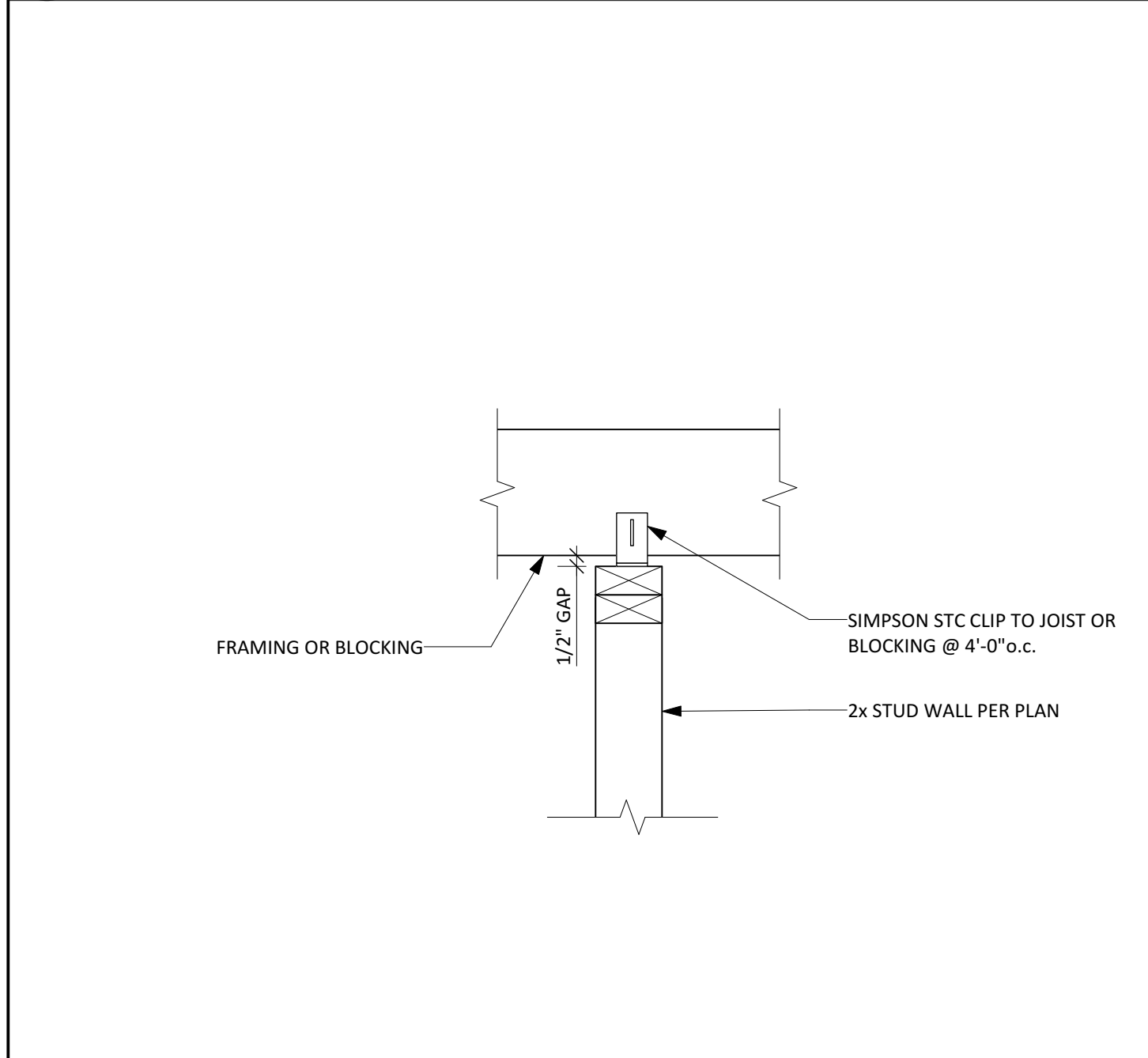
5 TYPICAL LEDGER SPLICE



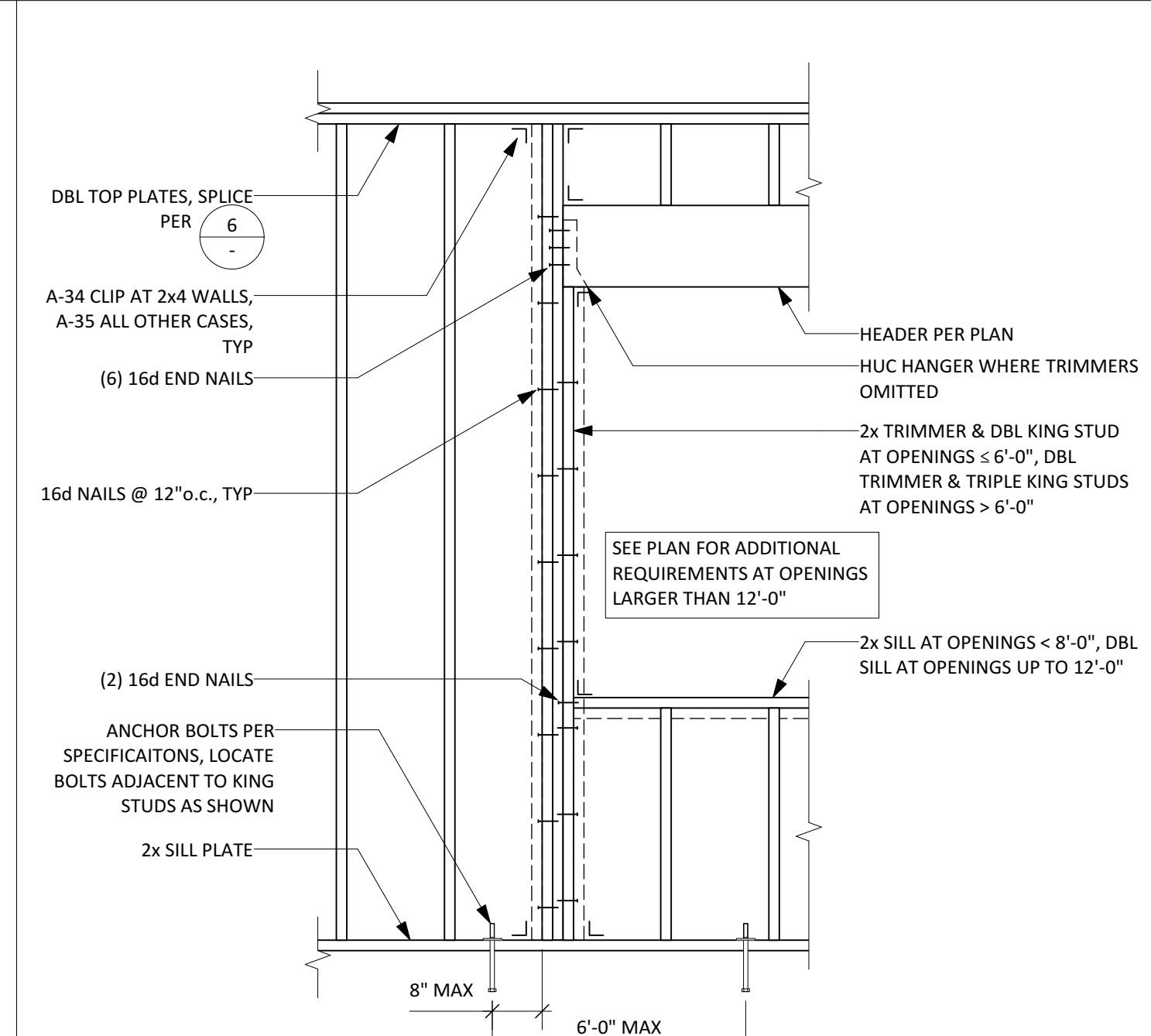
6 TYPICAL DOUBLE TOP PLATE SPLICE



3 TYPICAL WOOD JOIST BRIDGING



12 TYPICAL NON-BEARING WALL TO FRAMING



9 TYPICAL FRAMING 2x STUD WALL

Revisions:

△	Date

Date: 7/17/21
 Scale:
 Project No: 21.070
 Sheet: